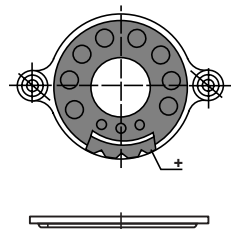


Sub-Miniature Low Profile Speakers* (continued)

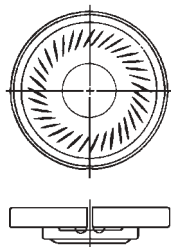
Round Plastic Frame Types

Part Number	Frame Diameter (mm)	Frame Depth (mm)	Rated Power (Watts)		Cone Material	Resonant Frequency (Hz)	Frequency Response (Hz)	SPL (dB)	Magnet Type	Net Weight (Grams)
			Nom.	Max.						
SR800RMF	20	9.0	0.1	0.2	Mylar	750 ± 20%	Fo ~ 3000	77	Ferrite	7.4
S100RMF	27	9.0	0.1	0.2	Mylar	800 ± 20%	Fo ~ 5000	80	Ferrite	7.6
S125RMF	29	10.0	0.1	0.2	Mylar	760 ± 20%	Fo ~ 3500	80	Ferrite	8.3
S125RMFL	29	6.0	0.1	0.2	Mylar	670 ± 20%	Fo ~ 6000	80	Ferrite	8.2
S150RMF	40	8.7	0.1	0.2	Mylar	250 ± 20%	Fo ~ 5500	75	Ferrite	16.0
S100RMS	28	7.2	0.5	0.8	Mylar	680 ± 20%	Fo ~ 5500	88	Rare Earth	9.8
S125RMS	30	7.3	0.4	0.8	Mylar	650 ± 20%	Fo ~ 10000	88	Rare Earth	9.8
S160RMS-B	40	5.3	0.5	1.0	Mylar	420 ± 20%	Fo ~ 5500	87	Rare Earth	6.8
S200RMS	50	8.0	0.2	0.4	Mylar	350 ± 20%	Fo ~ 10000	80	Rare Earth	11.0
S225RMS	57	8.0	0.2	0.4	Mylar	350 ± 20%	Fo ~ 6000	80	Rare Earth	12.0

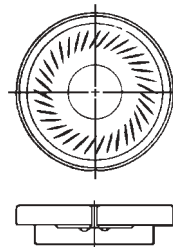
S160RMS-B



Rare Earth



Ferrite



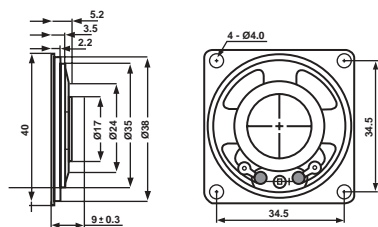
Square Metal Frame Types

Part Number	Frame Diameter (mm)	Frame Depth (mm)	Rated Power (Watts)		Cone Material	Resonant Frequency (Hz)	Frequency Response (Hz)	SPL (dB)	Magnet Type	Net Weight (Grams)	Mounting Dimensions Dia. (mm)
			Nom.	Max.							
S160SL	40 x 40	9.0	0.2	0.3	Paper	550 ± 20%	Fo ~ 6700	80	Rare Earth	10.4	34.5 x 34.5
S200SL	50 x 50	10	0.3	0.6	Paper	480 ± 20%	Fo ~ 6000	81	Rare Earth	12.8	40 x 40

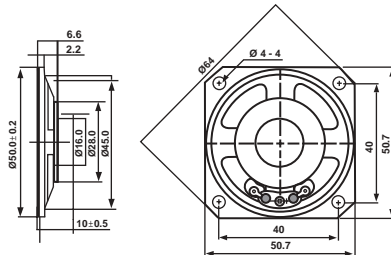
Square Plastic Frame Types

Part Number	Frame Diameter (mm)	Frame Depth (mm)	Rated Power (Watts)		Cone Material	Resonant Frequency (Hz)	Frequency Response (Hz)	SPL (dB)	Magnet Type	Net Weight (Grams)	Mounting Dimensions Dia. (mm)
			Nom.	Max.							
S110SL	28 x 28	10.8	2.0	3.0	Mylar	270 ± 20%	Fo ~ 20000	82	Rare Earth	15	22.6 x 22.6

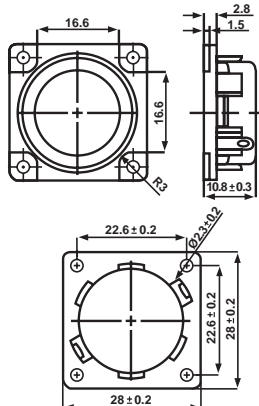
S160SL



S200SL



S110SL



*Standard voice coil impedance 8 ohms ± 15%. These speakers can be supplied with a variety of voice coil impedances. The most common impedances are 4, 16, 32, 45 and 100 ohms.